



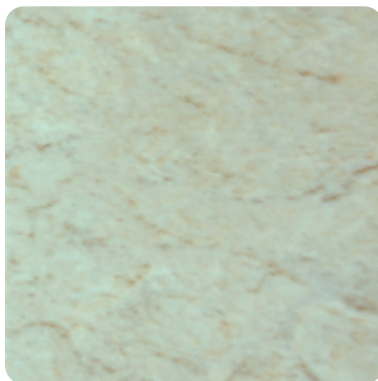
# LUXURY VINYL TILE

**INFINITE**

TopJoy International



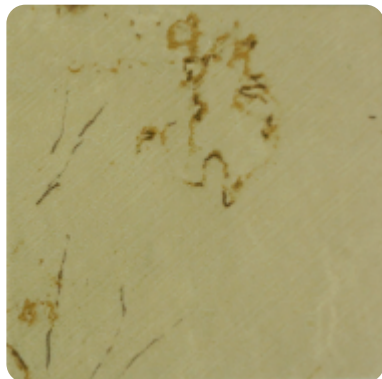
I-2000



I-2001



I-2002



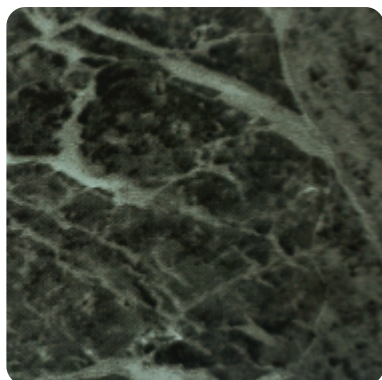
I-2003



I-2004



I-2005



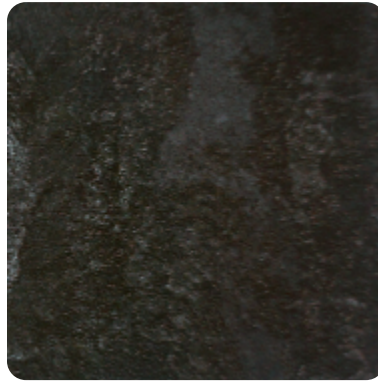
I-2006



I-2007



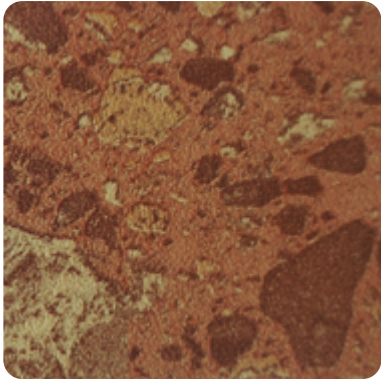
I-2008



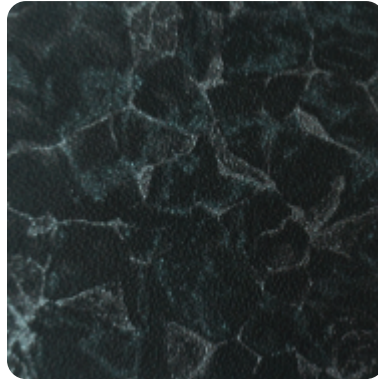
I-2009



I-2010



I-2011



I-2012



I-2013



I-2014



I-2015



I-2016

# Luxury Vinyl Tile

Top-Joy Infinite Series Luxury Vinyl Tile combines stunning looks with outstanding performance. Whether it's healthcare, supermarket, business center, education or hospitality, we use a range of authentic wood, cool stone and modern abstract designs trend to create a collection that will transform the look, feel and impact of an interior. Not only Infinite Luxury Vinyl Tile is warm and realistic, but also it is highly durable and extremely resistant to scratch thanks to its pure PVC wear layer. Its PU treatment makes the maintenance easy and cost-effective.

## Technical Data

Dimension	Rectangle Size: 6"x36" , 4"x36" ,12"x24" Square Size: 12"x12" ,18"x18"
Thickness	1.2mm - 5.0mm
Backing Type	Self adhesive, Dry back, Interlock, Loose Lay
Surface Finish	Glossy, matte, semi-matte

Safety Criteria	Standard	Value
Flammability	EN13501-1	Bfl
Slip Resistance	EN13893	DS
Formaldehyde Emission	EN717-1	None
Castor Wheel Test	EN425	Pass
Color Fastness	ISO 105-BO2	≥6
Determination of migration of heavy metals	EN71	None

Performance	Standard	Value
Wear Resistance	EN-660-2	≤0.015g
Flexibility	EN435	No damage
Curling After Exposure To Heat	EN434	≤1.2mm(80 ℃ ,6Hrs)
Peel Resistance	EN431	≥2.8Kgf/2cm
Dimensional Stability	EN434	≤0.12%(80 ℃ ,6Hrs)
Residual Indentation	EN434	≤0.1mm